

# Lazy H Mutual Water Company

## Cross Connections

### 1. HEALTH STATUTES AND REGULATIONS (ADOPTED BY REFERENCE).

The California Health and Safety Code provides, among other things, that it is unlawful for any person to supply any water used or intended to be used for human consumption or for domestic purposes which is impure, unwholesome or unpotable. Regulations of the California State Department of Health Services and the Drinking Water Standards of the United States Public Health Service prohibit unprotected cross connections between the public water supply and any unapproved source of water. The regulations of the California State Department Health Services relating to cross connections and backflow prevention devices in effect from time to time are hereby adopted by this reference and made a part of the Lazy H Mutual Water Company Policies.

### 2. PURPOSE.

To comply with the Health and Safety Code and the regulations of these health agencies, and the following purposes, Company will neither make nor maintain any service connection unless Company's water system is protected as provided in this policy and the Regulations of California Department of Health Services:

- A. To protect Company's water supply against actual or potential cross connections by isolating within the premise contamination or pollution that may occur because of some undiscovered or unauthorized cross connection on the premise.
- B. To eliminate existing connections between drinking water systems and other sources of water not approved as safe and potable for human consumption.
- C. To eliminate cross connections between drinking water systems and ether sources of water or process water used for any purpose whatsoever which Jeopardize the safety of the drinking water supply.
- D. To prevent the making of cross connections in the future.
- E. To protect the drinking water supply within the premises where plumbing defects or cross connections may endanger the drinking water supply.

### 3. INTENT - DEGREE OF HAZARD.

It is recognized that there are varying degrees of hazard, and the degree of protection should commensurate with the degree of hazard. In the instances where conditions warrant modifications of the standard installation herein indicated may be made.

#### **4. PLUMBING CHANGES REQUIRED.**

In special circumstances, when customer is engaged in the handling of especially dangerous or corrosive liquids or industrial or process waters, Company may require the customer to eliminate certain plumbing or piping connections as an additional precaution and as a protection to the backflow prevention devices. In making plumbing connections customer shall be guided entirely by local or state planning ordinances and not the Company.

#### **5. RELIEF VALVE RECOMMENDED.**

As a protection to customer's plumbing system, a suitable relief valve should be installed and maintained by him, at his expense, when check valves or other protective devices are used. The relief valve shall be installed between the check valves and the water heater.

#### **6. BACKFLOW PROTECTION ON ADDITIONAL WATER SUPPLY LINES.**

Whenever backflow protection has been found necessary on a water supply line entering a customer's premises, then any and all water supply lines from Company's mains entering such premises, building or structures shall be protected by an approved backflow prevention device, regardless of the use of the additional water supply line.

#### **7. PROTECTION AGAINST INTERSTREET MAIN FLOW.**

Two or more service connections supplying water from different street mains to the same building structure or premises through which an interstreet main flow may occur, shall have an approved backflow prevention device on each water service connection to be located adjacent to and on the property side of the respective meters.

#### **8. LOCATION OF DEVICES.**

Backflow prevention devices shall be installed by customer at the water service connection adjacent to the meter; in an accessible location, above ground wherever practicable, and in accordance with Company's Standard Drawings and Specifications. Reduced pressure principal backflow prevention devices must always be located above ground.

#### **9. DEVICE SIZE.**

Backflow prevention devices shall have at least the same cross sectional area as the water meter. In those instances where continuous water supply is necessary, two sets of backflow prevention devices shall be installed in parallel. Where parallel devices are required, the sum of the cross sectional areas of the devices shall be at least equivalent to the cross sectional area of the water meter.

#### **10. DEVICE OPERATING PRESSURE.**

Where the maximum pressure in the street water main exceeds 150 PSI, a pressure regulator set at 150 PSI or less must be installed upstream of the backflow prevention device.

## **11. INSTALLATION.**

Company shall approve all backflow prevention devices. Purchasing and installation of said devices is the responsibility of Customer.

## **12. MAINTENANCE AND TESTING.**

The California Public Health Department Regulations and Company require that all backflow prevention devices be tested periodically (approximately every 12 months). Company shall notify customer when testing of backflow preventor is needed. If customer does not provide a certified test report by the due date, company will test the device and add charges for test on the customer account. The customer shall be responsible for the repair, overhaul or replacement of a defective device and charges associated with same. The Company shall maintain reports of testing and maintenance for a minimum of three years.

## **13. DISCONTINUANCE OF SERVICE.**

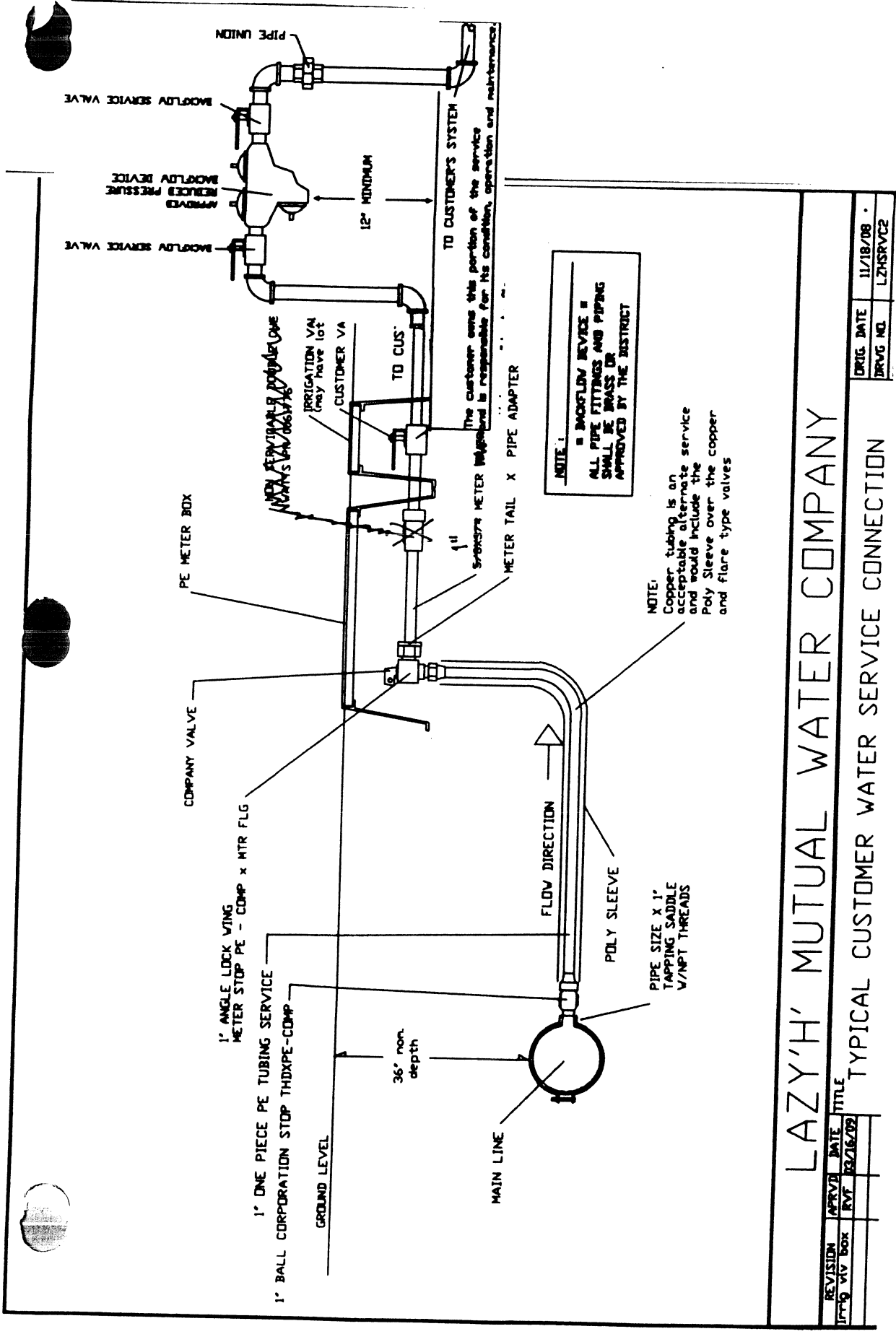
Service to any premise may be immediately discontinued by Company if a backflow prevention device required by these rules is not installed or maintained, or if a backflow prevention device has been removed or bypassed, or if unprotected cross connections exist on the premises, or, if customer fails to timely pay any charges due hereunder. Service will not be restored until such conditions are corrected.

## **14. TYPES OF DEVICES REQUIRED FOR SPECIFIED PREMISES OF SYSTEMS.**

An approved backflow prevention device of the type adopted by the Board for a particular type of premises or system shall be installed at each service connection.

## **15. CHARGES.**

These rules being deemed necessary to protect the public water supply from backflow from customers' premises, the charges adopted by the Board are to be borne by the customer requiring the installation, periodic testing, maintenance, repair and replacement of the backflow prevention device.



PIPE UNION  
 APPROVED REDUCE PRESSURE BACKFLOW DEVICE  
 APPROVED REDUCE PRESSURE BACKFLOW SERVICE VALVE  
 12" MINIMUM  
 TO CUSTOMER'S SYSTEM

PE METER BOX  
 COMPANY VALVE  
 1" ANGLE LOCK WING METER STOP PE - COMP x MTR FLG  
 1" ONE PIECE PE TUBING SERVICE  
 1" BALL CORPORATION STOP THDXPE-COMP  
 GROUND LEVEL  
 36" non depth  
 MAIN LINE  
 IRRIGATION VA (may have lot)  
 CUSTOMER VA  
 TO CUS  
 TO CUSTOMER'S SYSTEM  
 METER TAIL X PIPE ADAPTER  
 1" METER  
 SYNCHRONOUS METER

NOTE 1:  
 BACKFLOW DEVICE - ALL PIPE FITTINGS AND PIPING SHALL BE BRASS OR APPROVED BY THE DISTRICT

NOTE:  
 Copper tubing is an acceptable alternate service and would include the Poly Sleeve over the copper and flare type valves

LAZY'H' MUTUAL WATER COMPANY  
 TYPICAL CUSTOMER WATER SERVICE CONNECTION

REVISION	APPROVAL	DATE	TITLE
1/1/19	VIV BOX	8/1/19	

ORIG. DATE	11/18/08
ORIG. NO.	LZHSRVCE